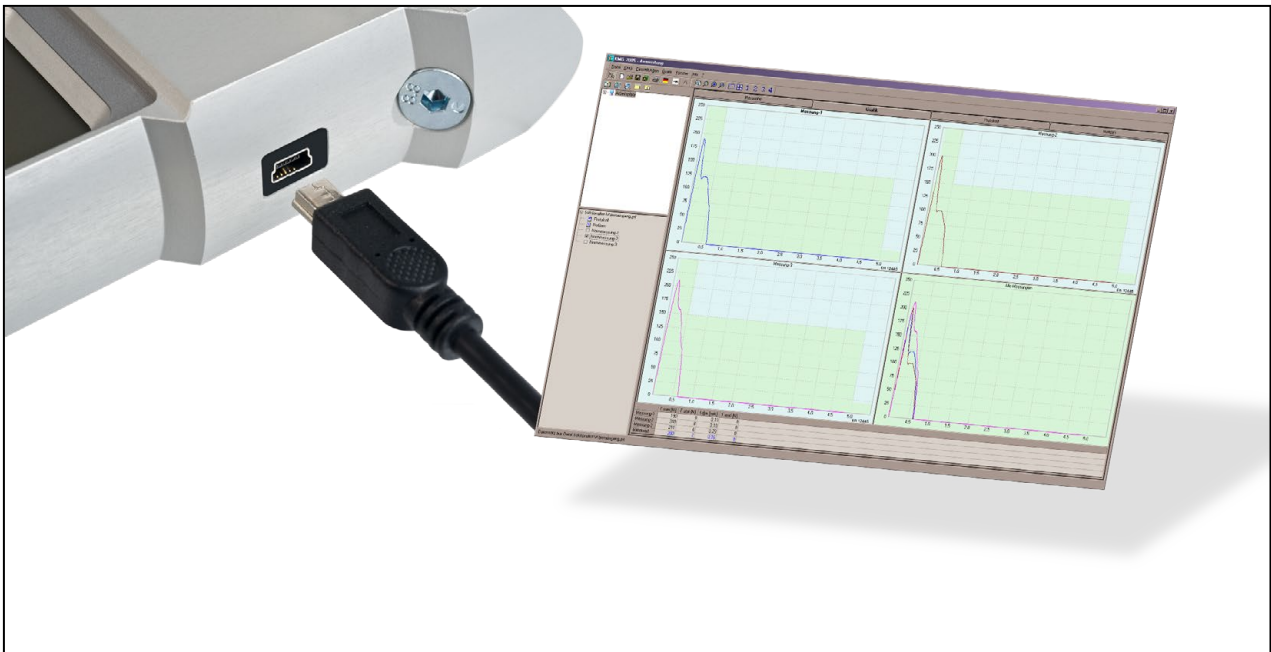


KMG-VD 2005



Short guide:

PC Interface configuration

Introduction

The PC-programm *KMG-VD 2005* is intended to download, archive and protocol measurement data from the gate/door force tester *KMG-2000*.

After setting up the connection between the software and the device, all measurement graphs stored in the device memory can be transferred to the PC and then evaluated for a measurement protocol according to door and gate safety standards.

The data connection is based a USB interface (*KMG-2000-G*) or a RS232 interface (*KMG-2000-L*).

Connecting the interface cable

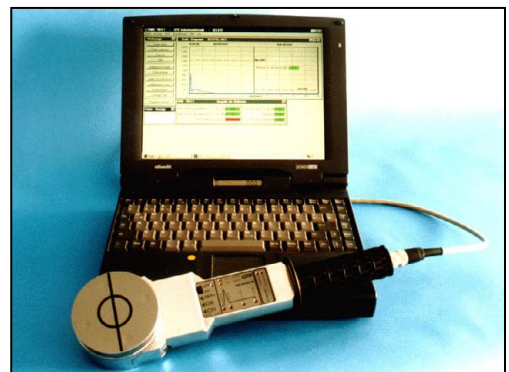
Connecting *KMG-2000-G* with the PC

- 1 Connect Mini-B-plug of the supplied USB cable to the USB socket on the left side of the device
 - 2 Connect A-plug of the cable to a free USB port of the PC
- Device is turned on automatically



Connecting *KMG-2000-L* with the PC

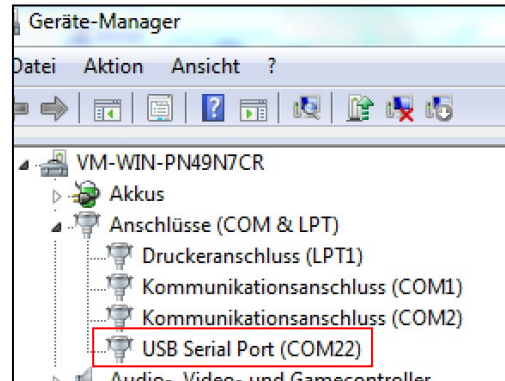
- 1 Remove lid from the tip of the handle of the device
- 2 Connect round plug of the supplied connection cable to the socket in the tip of the handle of the device
- 3 Connect RS-232 plug of the cable to COM1 of the PC
- 4 Switch on device



Assigning the COM-port (KMG-2000-G only)

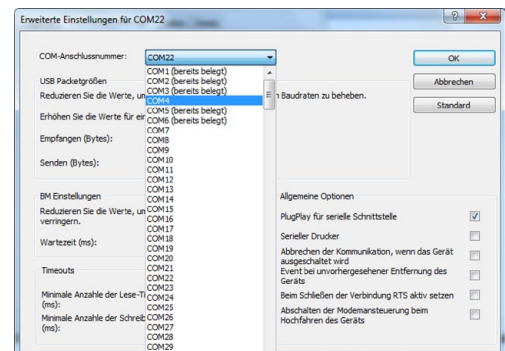
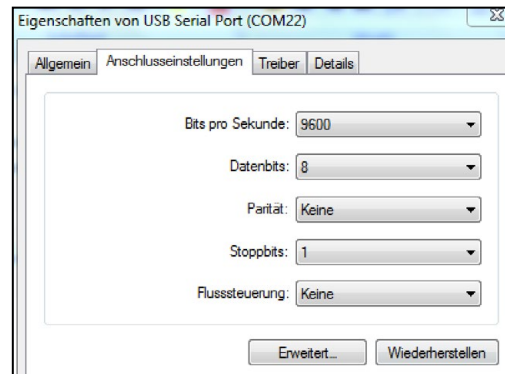
Check COM-port assignment

- 1 Open Windows control panel
- 2 Open Windows device manager
- 3 Expand *Ports*
 - ▶ All serial and parallel ports für external devices are listed.
- 4 Find entry *USB Serial Port*
 - ▶ The COM-number written in brackets / parenthesis needs to be less than 17. If it is larger than 16 the COM-port assignment needs to be changed.



Change COM-port assignment

- 1 Right-click entry *USB Serial Port*
- 2 Select *Properties*
 - ▶ Window *USB Serial Port Properties* is loaded.
- 3 Select Tab *Port Settings*
- 4 Click Button *Advanced...*
 - ▶ Window *Advanced Settings for COMxx* is loaded
- 5 In drop-down menu *COM Port Number* select the lowest free *COM-number*
- 6 Close window with *OK*

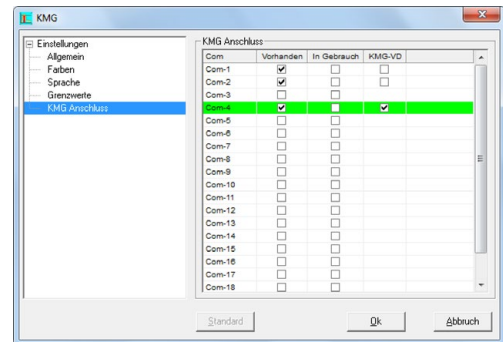


If there is no free COM-port-number smaller than 17, use the above described procedure to free up a COM-port less than 17.

Program options

Setup COM-port-number in program

- 1 Start *KMG-VD 2005*
- 2 In program menu select *Options> Options*
 - ▶ Program options window is loaded
- 3 Select *KMG Connection* in left column
 - ▶ The right column of the window shows a list with all COM-ports.
- 4 Select the previously assigned COM-port by ticking the checkbox in the table-column *KMG-VD*.
- 5 Close window with *OK*



Interface test

Test device connection

- 1 in program menu select *KMG > Test serial interface*
 - ▶ The program performs an automatic test of the interface connection.
 - ▶ A window with the test result pops up.
- 2 Close window with *OK*

